

The Intergas HRE Boiler Range



Telephone
01223 89 08 54
or call
07727 636 007
07922 419 763

Service - Repairs - Installations
Landlord Certificates - Free Estimates



balshamboilersltd@gmail.com


INTERGAS®

Less is more



The smart choice for heating and hot water

Having launched the **first condensing boiler** in 1989, the leading Dutch boiler manufacturer Intergas is now one of the largest manufacturers in Europe with over **40 years' experience**.

Taking condensing technology to new heights with a **unique two-in-one heat exchanger**, our groundbreaking energy-efficient boiler designs have made us **first choice** with many households throughout the UK.

Compact and lightweight, the Intergas Compact HRE range represents the only double condensing boilers now available in the UK. With **significantly fewer moving parts**, these revolutionary boilers deliver more reliability for less servicing.

In fact, **since its introduction in 1996** our heat exchangers have **not suffered** one single **mechanical breakdown**.

The Company	2
Why Intergas?	4
Innovative technology	6
Energy efficient	8
The environment	9
The right boiler	10
The Intergas range	12
Combi Compact HRE	14
Combi Compact HRE 24/18 Combi Compact HRE 28/24 Combi Compact HRE 36/30	
Compact HRE SB	16
Compact HRE 18 SB Compact HRE 24 SB Compact HRE 30 SB	
Compact HRE OV	18
Compact HRE 18 OV Compact HRE 24 OV Compact HRE 30 OV	
Gas Safe	20
Warranty	21
Flue options	22

Artists impression of new factory, due for completion Autumn 2011.



Why Intergas?

Our expertise, experience and innovative approach over two decades gives Intergas customers a level of confidence and reassurance rarely experienced when making such an important household purchase. After all, how many manufacturers can boast that even their very first condensing boilers can still be serviced today?

And, not many manufacturers today can deliver the unique built-in technology that allows conversion from a combi to a system boiler with only a few simple adjustments to the control system. So that when you want to extend your property or need to change your central heating system to a heat-only or sealed system application, you've no need to give up the Intergas boiler that will have served you so unfailingly in the past.

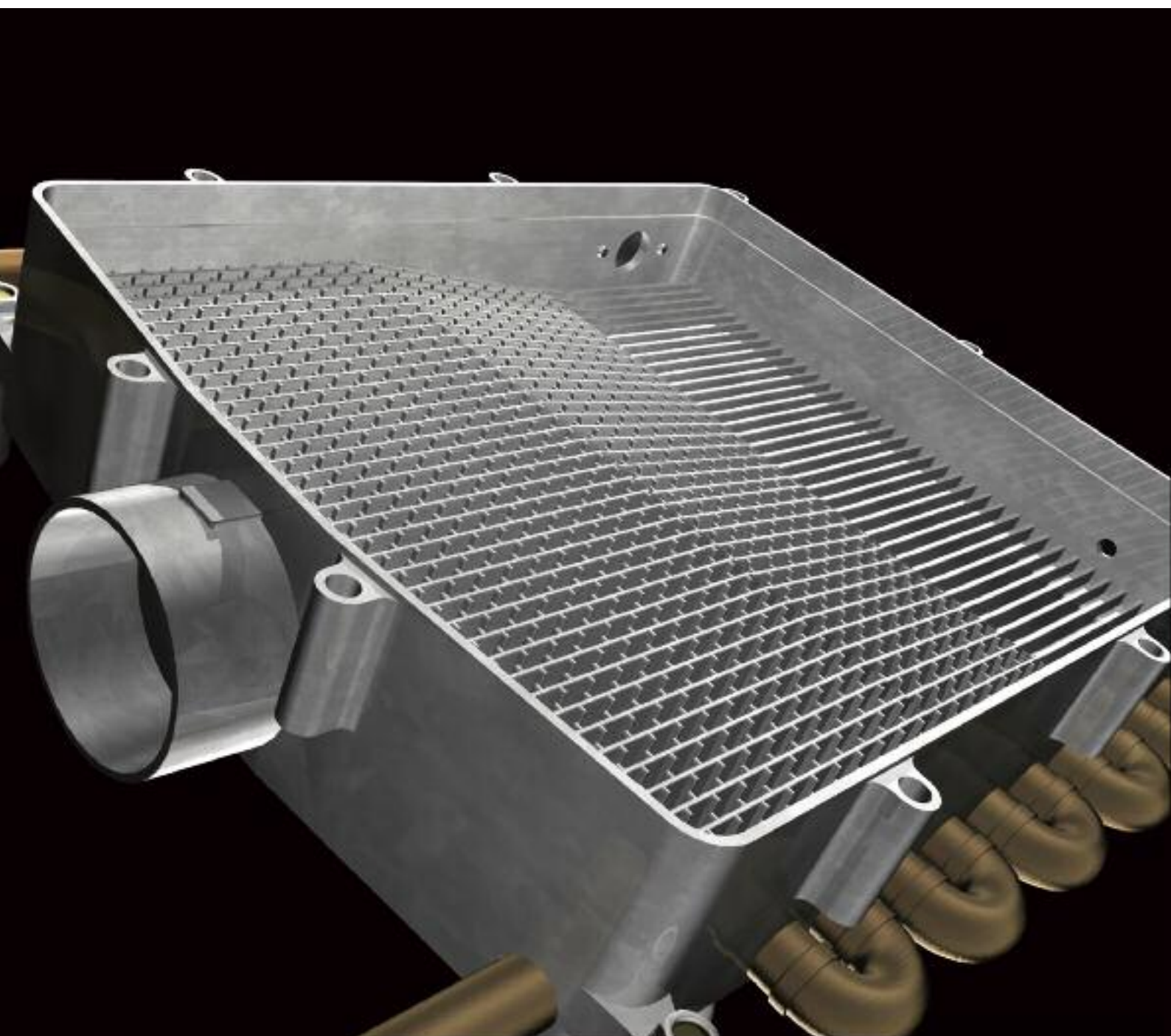
Because you can relax



From wired to wireless, analogue to digital, the HRE range works with ordinary on-off thermostats, as well as programmable room thermostats. To enhance the efficiency of our boilers, wireless heating control systems can be installed which provide the ability to control two individual heating zones at different comfort levels and at different times.



Less is more



Less parts, more reliability

Every Intergas Combi Compact HRE boiler features our unique back-to-back, two-in-one heat exchanger that reduces heat losses and delivers the optimum heat transfer for an exceptionally economic performance year after year.

Separating the circuits for heating and hot water also means there's no need for a diverter valve or secondary domestic hot water plate heat exchanger, eliminating the source of possible future component failures. Which is why every Intergas heat exchanger carries its own 10-year guarantee.



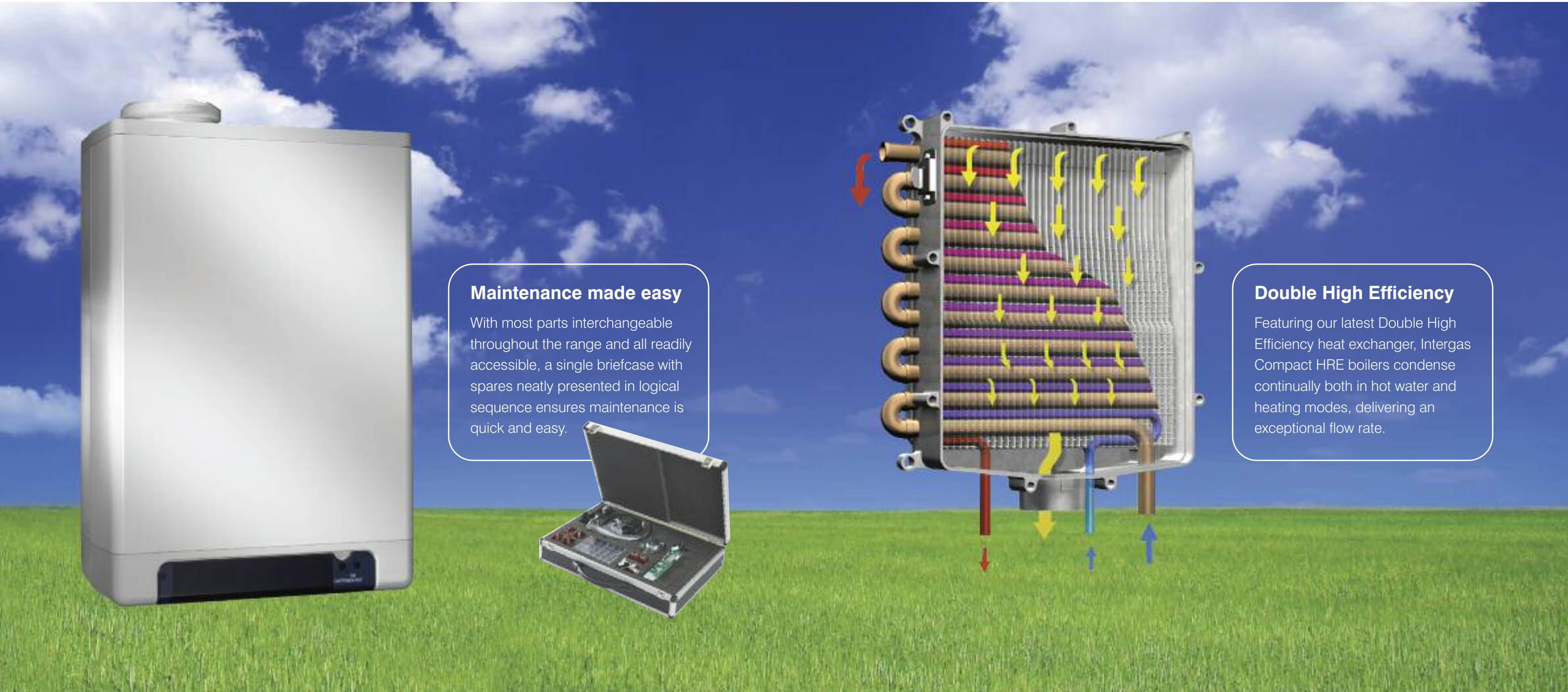
- **NO** diverter valve
- **NO** valve motor
- **NO** auto-air vent
- **NO** hot water plate heat exchanger
- **NO** air pressure switch

This minimalist approach to boiler design also delivers noticeable energy savings with the accompanying lower bills, especially as a switch-mode power supply reduces stand-by losses to almost zero - simply because, until the boiler is called on to heat, only a negligible amount of electricity is used.



Customer friendly

Environmentally friendly



Easy to use, easy to maintain

An Intergas Compact HRE boiler is an 'intelligent' boiler with a constantly modulating fan. Sensors control the fan speed as temperature starts to rise within the CH circuit which automatically adjust its performance against your system needs. Moreover, a unique 'self-learning' eco-mode automatically switches off the domestic hot water function at night or when there is no demand during weekends away or family holidays. And a built-in frost thermostat protects against cold-weather damage.

Saving energy, saving the planet

High efficiency is top of most people's list when choosing a new boiler. For an energy-efficient boiler not only produces less carbon dioxide, it also uses less fuel for the same heat output, automatically lowering heating costs, saving you money over the life of your boiler while at the same time helping reduce the impact of global warming.

Choosing the right boiler for your home



Combi

A combi or combination boiler 'combines' a high-efficiency water heater with a central heating boiler in one compact unit. With no need for a hot water cylinder in the loft as hot water is supplied directly from within the unit, a combi is ideal for a flat or bungalow with little or no roof space and homes with a loft conversion. And because it delivers endless hot water straight to your taps or shower, it only heats the water as you need it, helping save on hot water costs.



System boiler

Like a traditional boiler, a system boiler provides stored hot water but with two important differences. To begin with, many of the heating and hot water system components are located in the boiler itself for quicker and easier installation. And a system boiler doesn't need a feed and expansion tank in the loft. You can also choose between a mains pressure hot water cylinder and a low pressure hot water cylinder. They're compatible too with solar water heating systems for environmentally friendly hot water and further cost savings.



Open vent boiler - Traditional

An open vent boiler - often described as a traditional boiler - is the perfect choice for homes already with a heating and hot water system with a separate hot water cylinder. Traditional boilers also need a header tank to feed the hot water cylinder and an expansion cistern in the loft. They're the practical option for homes with more than one bathroom where plenty of stored hot water is needed or in low water pressure areas. Again, these boilers work with solar water heating systems for environmentally friendly hot water and further cost savings.



Introducing the full range of Intergas Compact HRE boilers

Combi Compact HRE 24/18 - 28/24 - 36/30

Combining high efficiency in domestic hot water and central heating modes, the Combi Compact HRE energy-efficient design flawlessly demonstrates our revolutionary condensing boiler technology - Double High Efficiency - developed exclusively by Intergas and a groundbreaking component of the whole range. With an efficiency rating of up to 95.8% for domestic hot water, the Intergas Combi Compact HRE is available with three power outputs to satisfy most domestic applications.



Boiler shown with standard 90° flue

Compact HRE 18-24-30 SB

A central heating-only boiler, the Intergas Compact HRE SB system boiler creates the warm and inviting home you've always wanted. Like all Intergas boilers, the Compact HRE SB not only works with regular 'on/off' thermostats but also with programmable room thermostats. With a built-in frost thermostat to protect your system against cold-weather damage, you can also add a hot water storage cylinder, enabling the boiler to heat the hot water supply as well as feeding the radiators.



Boiler shown with standard vertical flue

Compact HRE 18-24-30 OV

The Intergas Compact HRE OV open vent boiler is a central heating-only boiler for use in an open vented system with a header tank. An ideal replacement for existing open vent boilers, it is designed to supply your home with all the warmth you need. The constantly modulating fan automatically adjusts the capacity of the boiler to your requirements, making sure no valuable energy is wasted. A hot water storage cylinder can also be added, enabling the boiler to provide hot water too.



Boiler shown with 90° elbow feature the new lower profile design, available from October 2011.

Boiler shown with offset 90° flue





Intergas Combi Compact HRE	24/18	28/24	36/30
Domestic Hot Water (DHW)			
Nom. power rating (lower value) kW	5.6 - 22.1	7.2 - 28.0	7.6 - 32.7
Domestic hot water threshold. l/min	2	2	2
DHW Flow Rate at 40°C. l/min	10	12.5	15
DHW Flow Rate at 60°C. l/min	6	7.5	9
ΔT 25°C. l/min	12	15	18
ΔT 35°C. l/min	9	11	13
DHW temperature (factory setting)	55°C	55°C	55°C
Central Heating (CH)			
Nom. input rating (lower value)* kW	5.6 - 18.7	7.2 - 23.7	7.6 - 27.0
Rated power* kW	6.0 - 18.2	7.7 - 23.1	8.2 - 26.6
Max. CH water pressure	3 bar	3 bar	3 bar
Max. CH water temperature	90°C	90°C	90°C
Boiler dimensions and weight			
Height. mm	590	650	710
Width. mm	450	450	450
Depth. mm	240	240	240
Weight. kg	30	33	36

- No diverter valve
- No valve motor
- No hot water plate heat exchanger
- No air pressure switch
- Less parts, more reliability
- Almost no standby losses
- Horizontal and vertical flue options
- 10 year warranty on heat exchanger
- 2 year warranty on parts
- 3 year warranty on parts if warranty card registered
- 5 year warranty if installer is Platinum 5 rated

Main photo: Combi Compact HRE 24/18 with offset 90° flue

(*) The maximum CH power is factory set at 70% of the highest value.
We have a policy of continual improvement and development.
Therefore, we reserve the right to change specifications without prior notice.



Combi Compact HRE 24/18 with standard vertical flue



Combi Compact HRE 24/18 with standard 90° flue



For all flueing options see page 22

Boiler shown with 90° elbow feature the new lower profile design, available from October 2011.



Intergas Compact HRE SB	18	24	30
Central Heating (CH)			
Nom. input rating (lower value)* kW	5.6 - 18.7	7.2 - 23.7	7.6 - 27.0
Rated power* kW	6.0 - 18.2	7.7 - 23.1	8.2 - 26.6
Max. CH water pressure	3 bar	3 bar	3 bar
Max. CH water temperature	90°C	90°C	90°C
Boiler dimensions and weight			
Height. mm	590	650	710
Width. mm	450	450	450
Depth. mm	240	240	240
Weight. kg	30	33	36

- No air pressure switch
- Less parts, more reliability
- Almost no standby losses
- Horizontal and vertical flue options
- 10 year warranty on heat exchanger
- 2 year warranty on parts
- 3 year warranty on parts if warranty card registered
- 5 year warranty if installer is Platinum 5 rated

Main photo: Compact HRE SB 24 with standard 90° flue

(*) The maximum CH power is factory set at 70% of the highest value.
We have a policy of continual improvement and development.
Therefore, we reserve the right to change specifications without prior notice.



Compact HRE SB 24 with offset 90° flue



Compact HRE SB 24 with standard vertical flue



For all flueing options see page 22

Boiler shown with 90° elbow feature the new lower profile design, available from October 2011.



Intergas Compact HRE OV	18	24	30
Central Heating (CH)			
Nom. input rating (lower value)* kW	5.6 - 18.7	7.2 - 23.7	7.6 - 27.0
Rated power* kW	6.0 - 18.2	7.7 - 23.1	8.2 - 26.6
Max. CH water temperature	90°C	90°C	90°C
Boiler dimensions and weight			
Height. mm	590	650	710
Width. mm	450	450	450
Depth. mm	240	240	240
Weight. kg	29	32	35

Main photo: Compact HRE OV 30 with standard vertical flue

- No air pressure switch
- Less parts, more reliability
- Almost no standby losses
- Horizontal and vertical flue options
- 10 year warranty on heat exchanger
- 2 year warranty on parts
- 3 year warranty on parts if warranty card registered
- 5 year warranty if installer is Platinum 5 rated

(*) The maximum CH power is factory set at 70% of the highest value.
We have a policy of continual improvement and development.
Therefore, we reserve the right to change specifications without prior notice.



Compact HRE OV 30 with offset 90° flue



Compact HRE OV 30 with standard 90° flue



For all flueing options see page 22

Boiler shown with 90° elbow feature the new lower profile design, available from October 2011.



What you need to know about Gas Safe

The Gas Safe Register is the official stamp for gas safety in the UK and helps reinforce one simple message: gas, safe, register - keep gas safe. This powerful symbol gives you the immediate reassurance that a registered engineer is safe to work with gas.

All Intergas service technicians and recommended installers are Gas Safe-registered, ensuring they receive full technical support and are aware of the latest standards updates.

Intergas are members of the Benchmark scheme which is a nationally recognised scheme that ensures best practice in installation, commissioning and servicing of domestic heating and hot water products in line with Building Regulations in England and Wales.



Safeguarding your installation, protecting our reputation

Installing and servicing the unique Intergas boiler range is a task we only entrust to Gas Safe-registered engineers who have ideally taken part in our intensive training courses. Every Intergas boiler comes with a standard three-year boiler warranty, but if fitted by a Platinum 5 Installer this is extended to five years.



What is a Platinum 5 Installer?

Choose to have your boiler installed by an Intergas Platinum 5 Installer and your warranty will be increased to five years. This is because your installer has undergone additional training in Intergas products at one of our nationwide training centres and fulfils other special conditions and highest competency testing relating to gas and public safety.

Flue options

	Ref No.
Fitting Kits (sold separately)	
Fitting Kit A (Rear Jig) 24/18	093187
Fitting Kit A (Rear Jig) 28/24	093197
Fitting Kit A (Rear Jig) 36/30	093207
Fitting Kit B (12 ltr Robokit with isolation valves - all products)	090000
Fitting Kit C (8 ltr Robokit with isolation valves - all products)	090100
	Ref No.
Flue terminals & accessories	
Horizontal Offset Telescopic Wall Terminal Flue Kit (incl. low bend, available Oct 2011. 081282*)	081280
Horizontal Straight Telescopic Wall Terminal Flue Kit (incl. low bend, available Oct 2011. 082971*)	081281
Horizontal Straight Non Telescopic Wall Terminal Flue Kit (1000mm) (incl. low bend, available Oct 2011. Ref No. TBC*)	081288
Offset Elbow (for retro fit)	081289
Vertical Roof Terminal 60/100 (incl. 60/100 adaptor, available Oct 2011. 082973*)	086842
Weather Slate (flat roof)	087372
Weather Slate (pitched roof)	087910
1000mm Flue Extension 60/100mm (inc. wall clamp)	082975
90° Bend (60/100mm)	084660
45° Bend (60/100mm)	084661
	Ref No.
Plume management	
Plume Management Kit (PMK)	082974
1000mm Plume Management Flue Extension (inc. wall clamp)	081286
PMK PP60 90°	081284
PMK PP60 60° (2 per box)	081285
Plume Deflector	082976
	Ref No.
Boiler accessories	
Pipe/Valve Cover HRE	093217
Outside Sensor	203207
LPG Conversion Kit 36/30 & 28/24 Combi, 30Kw & 24Kw SB and 30Kw & 24Kw OV models disc size 5.50	075707
LPG Conversion Kit 24/18 Combi 18Kw SB & 18Kw OV models disc size 5.05	075697

Boiler accessories



LPG Conversion Kit 36/30 & 28/24 Combi, 30Kw & 24Kw SB and 30Kw & 24Kw OV models disc size 5.50 075707



LPG Conversion Kit 24/18 Combi 18Kw SB & 18Kw OV models disc size 5.05 075697



Pipe/Valve Cover HRE 093217



Outside Sensor 203207

* new article number in combination with low flue

Fixing jigs, flue terminals and accessories

Fixing jigs



Fitting Kit A (Rear Jig) 24/18 093187
Fitting Kit A (Rear Jig) 28/24 093197
Fitting Kit A (Rear Jig) 36/30 093207



Fitting Kit B (12 ltr Robokit with isolation valves - all products) 090000



Fitting Kit C (8 ltr Robokit with isolation valves - all products) 090100

Flue terminals & accessories



Horizontal Offset Telescopic Wall Terminal Flue Kit 081280 (incl. low bend, available Oct 2011. 081282*)



Horizontal Straight Telescopic Wall Terminal Flue Kit 081281 (incl. low bend, available Oct 2011. 082971*)



Horizontal Straight Non Telescopic Wall Terminal Flue Kit (1000mm) 081288 (incl. low bend, available Oct 2011. Ref No. TBC*)



1000mm Flue Extension 60/100mm (inc. wall clamp) 082975



Offset Elbow (for retro fit) 081289



90° Bend (60/100mm) 084660



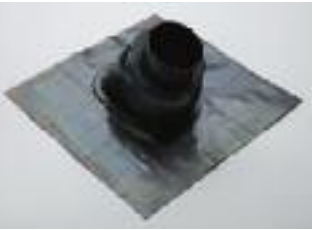
45° Bend (60/100mm) 084661



Vertical Roof Terminal 60/100 086842 (incl. 60/100 adaptor, available Oct 2011. 082973*)



Weather Slate (flat roof) 087372



Weather Slate (pitched roof) 087910

* new article number in combination with low flue

Vertical & horizontal flue terminal positioning

Flue system

All Intergas boilers utilise a concentric flue arrangement consisting of a 60mm diameter inner flue and a 100mm diameter outer air inlet duct and are available in both vertical and horizontal arrangements.

Horizontal flue system

The 60/100mm horizontal flue system may be extended to a maximum of length of 10 metres however, for every 45° bend used, the flue length should be reduced by 1 metre. For every 90° bend used, the flue length should be reduced by 1.5 metres.

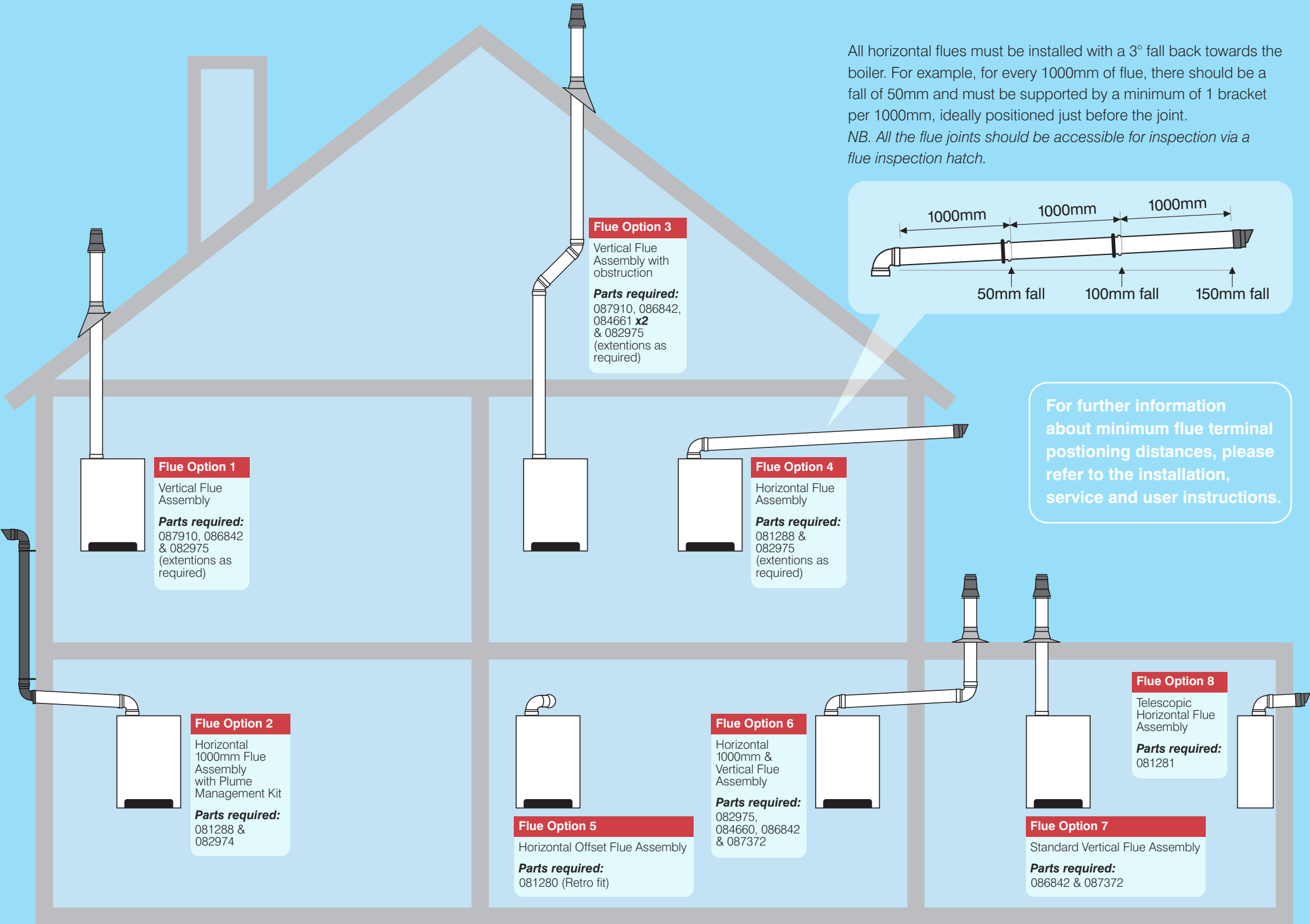
Vertical flue system

A vertical 60/100mm flue system is also available, which can be extended to a maximum of length of 10 metres. Again, this distance should be reduced if using 45° and 90° bends similar to the horizontal system.

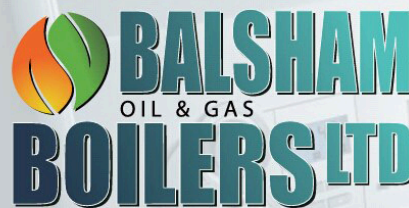
Plume Management Kit

To avoid plume vapour re-entering the boiler via the air intake, a Plume Management Kit (PMK) must be fitted.

The diagram opposite illustrates many typical flueing options, including parts required. These are for illustration purposes only. Please consult your installer or Intergas stockist for more bespoke installations.



All flue systems must be installed and terminated in accordance with BS 5440 Part 1



Telephone
01223 89 08 54

or call
07727 636 007
07922 419 763

Service - Repairs - Installations

Landlord Certificates - Free Estimates



balshamboilersltd@gmail.com