



Hounsfield Boilers

At the heart of every good heating system



The Tuscan Oil Fired Boiler Range



Reduce Your Heating Costs.....

Independently tested by BSRIA to European Boiler Efficiency Regulations, Tuscan condensing boilers have full load efficiencies of up to 97%. That's up to 20% more efficient than an existing traditional boiler and potentially a 20% reduction in your fuel bills!

Free 5 Year Warranty.....

We are so confident in the quality of our product that we guarantee all the components for **5 YEARS** with the exception of service items. We even send you a **warranty certificate and an annual reminder** that it's time to get your boiler serviced, so we don't sell and forget!

Simplicity, the ultimate sophistication.....

For the homeowner, a smart wipe-clean casing with child-proof controls. For the installer and service engineer, a simple uncluttered design providing easy access for installation and service.

Simple fuel supply system.....

No need for a conventional two pipe flow and return system or a deaerator / Tigerloop system. Tuscan uses a single fuel supply pipe, **reducing initial installation costs and lifetime maintenance costs associated with deaerators.**

Oil tank location.....

With the increasing occurrence of oil theft oil, tank location is an important consideration. The fuel pump we use provides the potential for your fuel tank to be located up to 100 metres away from the boiler, out of sight in a secure location.

Thank you....

For taking the time to review this brochure, you're one step nearer to finding out about a boiler manufacturer with a difference.

We've combined our years of experience in listening to homeowners and installers with our experience in the oil fired boiler industry to develop the Tuscan range.

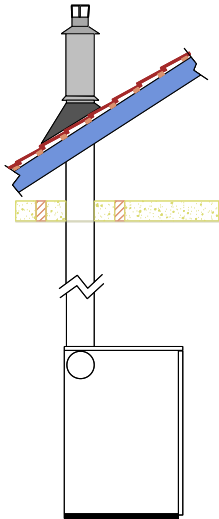
If you require additional information take a look at our web site, email or call us directly on 0845 680 8153.

Andrew Hounsfild
Managing Director
andrew@hounsfildboilers.co.uk
www.hounsfildboilers.co.uk



Flue Options

Vertical Flue

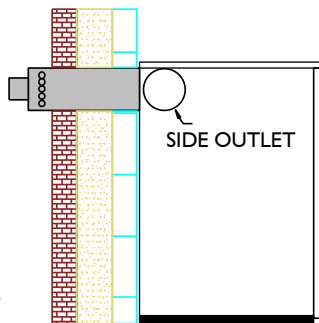


The flue is telescopic; as supplied it has a range of 1800-2750 mm from the ground level to the top of the flue; extension kits are available increasing the height up to 5 metres.

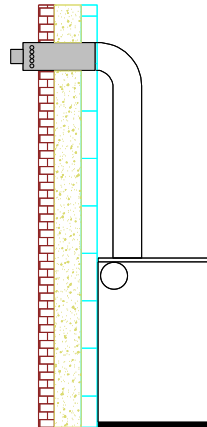
Low Level Balanced Flue

The flue has a telescopic range of 200-350 mm; 150, 300 and 600 mm extension kits are available.

Low level **side outlet** flue installations require elbow Pt. No. FK80E; the effective telescopic range of the flue is reduced by 150 mm.



High Level Balanced Flue



The high level flue kit has a telescopic range of 200-350 mm; 150, 300 & 600 mm extension kits are available.

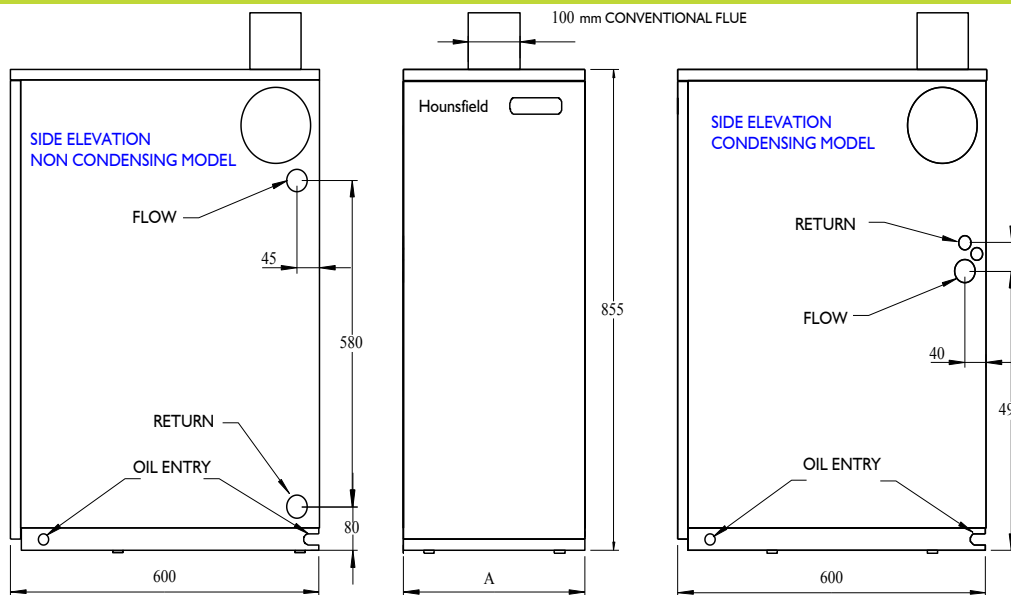
The flue can be used in **side outlet** orientation. With extension kits; the vertical section of the flue can be extended up to a maximum height of 3.5 metres.

Conventional Flue

A conventional flue adaptor is required. Stainless steel flue liners suitable for use with oil fired boilers must be installed; twin wall rigid or flexible liners are readily available from merchants.

Part No.	Description
FK100CA	Conv. flue adaptor
FL80LL	Low level kit
FK80E	Side outlet elbow
FL80HL	High level kit
FK80X15	150 mm horiz. ext.
FK80X300	300 mm horiz. ext.
FKTG	Terminal guard
FKV80	Vertical kit
FKV80X300	300 mm vert. ext.
FKV80X600	600 mm vert. ext.
FKV80X900	900 mm vert. ext.
FKV80P	Pitched roof flashing
FKV80F	Flat roof flashing

Boiler Options



Boiler accessories

Part No.	Description
BSF1.5-66	fire valve 1.5mtr
BSF3-66	fire valve 3mtr
BSF6-66	fire valve 6mtr
BSF9-66	fire valve 9mtr
BSF15-66	fire valve 15mtr
BS002	3/8" BSP non return valve

SEDBUK

Condensing boilers are band A rated

Note

A non return valve is required where the level of oil in the fuel tank may become lower than the burner.

Fittings included

- oil filter
- 1/4" x 10 mm pipe fittings
- 1/4" fuel shut off valve
- 1/2" BSP drain cock

Part No.	Model	Condensing	Dim. A	Output kW	Output BTU/hr x 1000	Full load efficiency %	Water connections		
							Flow	Return	Drain
TA12-19	12-19	yes	350	12-19	41-65	96-97	3/4" BSP	22 mm	21.5 mm
TA20-25	20-25	yes	350	20-25	68-85	96-97	3/4" BSP	22 mm	21.5 mm
TA26-30	26-30	yes	460	26-30	90-100	96-97	3/4" BSP	22 mm	21.5 mm
TC50-70	50-70	no	460	14-21	50-70	92-93	3/4" BSP	3/4" BSP	-
TC75-95	75-95	no	460	22-28	75-95	92-93	3/4" BSP	3/4" BSP	-

Here's why the installer or engineer should choose Tuscan.....

- ✓ Easy access for servicing
- ✓ Fittings included
- ✓ Versatile flue options
- ✓ Single fuel line supply
- ✓ Comprehensively tested
- ✓ No deaerator / Tigerloop required

Here's why the homeowner should choose Tuscan.....

- ✓ 97% efficiency
- ✓ Reduced heating bills.
- ✓ 5 year warranty
- ✓ Compact size
- ✓ Child-proof controls
- ✓ Quiet operation

Available from:

Balsham Boilers Ltd.

www.balshamboilersltd.co.uk

Tel. 01223 89 08 54